

# LINO

Lithuanian RDI Liaison Office

## EU knowledge sharing networks in Brussels

## Réseaux de partage des connaissances à Bruxelles



Research  
Council of  
Lithuania



2014-2020 Operational  
Programme for the  
European Union Funds  
Investments in Lithuania

Dr. Brigita Serafinavičiūtė

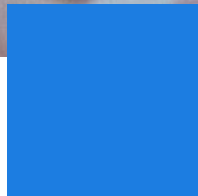
Head of Lithuanian RDI Liaison Office in Brussels – LINO

Vilnius, Oct 20, 2021

# LINO

Lithuanian RDI Liaison Office

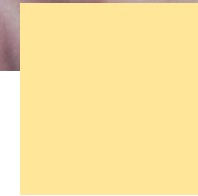
Since 2017



**Information exchange  
(policy issues + project  
opportunities)**



**Promotion of the Lithuanian RDI  
strengths and interests  
(dissemination + targeted events)**



**Facilitation of interaction and networking  
(EU institutions + European organisations  
+ Liaison Offices)**

# A window to the EU research landscape

## Clients

Universities  
Institutes  
Associations  
Public sector  
Individual researchers  
Spin-offs and start-ups  
etc.



Information



Networking



EU programmes



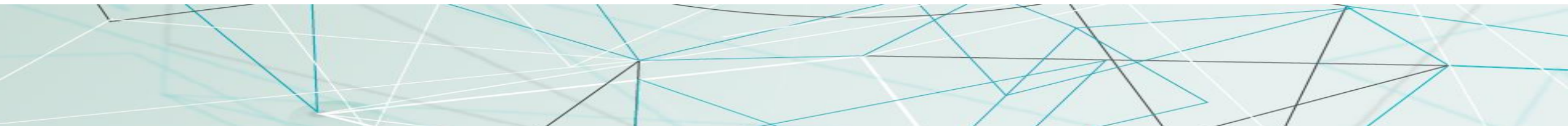
# LINO

Lithuanian RDI Liaison Office



## Partners

Other Liaison offices  
European associations  
Permanent Representation  
Lithuanian Embassies, etc.  
NCPs  
Research managers  
Ministries  
Agencies



# Power of the network since 1992

- Belgium (Flanders) >
- Belgium (Wallonia-Brussels) >
- Cyprus >
- Czech Republic >
- Denmark >
- Estonia >
- Finland >
- France >
- Germany >
- Hungary >
- Ireland >
- Israel >
- Italy (CNR) >
- Italy (ENEA) <



- < Latvia
- < Lithuania
- < Moldova
- > The Netherlands
- < Norway
- < Poland
- < Romania
- < Slovakia
- > Slovenia
- < Spain
- < Sweden
- < Switzerland
- > United Kingdom



Monitoring

Facilitating

Interacting

Sharing

What does  
IGLO do?





# IGLO Working Groups

Implementation

Innovation

Regional Policy

ERC

MSCA

Higher  
Education

International  
Cooperation

Security

Health

# LINO

Lithuanian RDI Liaison Office

10:00 - 11:30 CET

**EIC Accelerator -  
evaluation of the projects and  
requirements for the evaluators**



27 May 2021 - 1 June 2021  
virtual event, Slovakia

**MOBILITY & TRANSPORT  
DAYS - virtual information &  
brokerage event**



**SOCIAL SCIENCES  
AND HUMANITIES IN  
HORIZON EUROPE**

Diving into the  
opportunities

Webinar and Networking Event  
2 June 2021 | 9.30 - 13.00 CEST

- More than **77** international events
- Almost **4 000** participants from Lithuanian and abroad



May 21, 2021  
10:00-11:00 CEST (Brussels time)  
WEBINAR

**Security Appraisal in  
Horizon Europe**



**BROKERAGE ON HORIZON EUROPE  
CLUSTER 3 SECURITY RELATED  
TOPICS**

JUNE 29TH 9:00 - 12:00 (CEST/BRUSSELS TIME)  
ON-LINE EVENT

Logos: sagentuur Research Council, Mobilitas+, LINO Lithuanian RDI Liaison Office, Creating the Future of Lithuania, mita

# October events



**Date:** October 5<sup>th</sup> 2021 (Tuesday), 11.30 - 13.00

**Speaker:** Ms Rūta ŽARNAUSKAITĖ, Head of Unit at DG-RTD G2.04 "Horizon Europe Association"

Oficina del CDTI en Bruselas (SOST) in cooperation with the Lithuanian RDI Liaison Office LINO are happy to invite you to the October's IGLO Open October's edition (<http://lino.lt/en/>)

This online event dedicated to the overview of the latest news regarding Association to the Horizon Europe that is the closest form of cooperation with countries outside the EU. It regards not only to EU neighboring countries, but also to any country with a strong research and innovation capacity that share common values with the member states. The session will update the stages of the current negotiations with third countries and will give a vision on the next steps in the association agreements.

Registration is mandatory and should be made through [the following link](#) no later than October 3<sup>rd</sup>. The link to the event will be sent to the registered participants the day before event.

Feel free to share this invitation!

In the case of any questions contact:  
Marina Martínez <marina.oti@cdti.es>  
Julja Bernankevič <julja.bernankevic@lino.lt>



## Lithuanian-French scientific cooperation in Horizon Europe: results and perspectives

14.00-16.30 (EET), October 20, 2021

13.55-14.00 OPENING	
14.00-14.05	Welcome speech by Dr. Romas Baronas, the Chairman of the Research Council of Lithuania
14.05-14.15	Alix Dupont, Ambassador of France in Lithuania (FR): reminder of the importance of European cooperation in the field of research, PEUE, role of contact and information of the French Embassy.
14.15-14.25	Thomas Buffe, director of the Institut Français, Bilateral action of France - role of the IF in the scientific cooperation
14.25-14.45	Sandra Bijauskaitė, Export and Investments Promotion Division External Economic Relations and Economic Security Policy Department Ministry of Foreign Affairs of the Republic of Lithuania Jūratė Dovidavičienė, Head of Technology and Innovation Division, Ministry of Education, Science and Sports Lithuanian support system for the Horizon Europe, NCP structure in Lithuania.
14.45-16.15 DISCUSSION	
Part 1:	The European dimension of research, a national priority ANR's role in supporting French participation in the European Framework Programmes and building the ERA
Pierre-Olivier PIN, Coordination manager international/multilateral cooperation, Agence Nationale de la Recherche/ANR	Cooperation with France in the scientific projects
Jūratė Dovidavičienė, International Programme Unit, Research Council of Lithuania	EU knowledge sharing networks in Brussels
Dr. Brigita Serafinavičiūtė, Head of Lithuanian RDI Liaison Office in Brussels – LINO	Health, a shared priority
Part 2:	France's health priorities and the challenges of European cooperation
PCV santé France	Priorities of Lithuania Republic in the health policy
Giedrė Medvedaitė, Ministry of Health	From bilateral cooperation to European cooperation
Part 3:	Presentation of good practices, objectives, strengths, difficulties and obstacles
Dr. Giedrė MOULIN, Université de Haute Alsace – Mulhouse/CNRS Prof. Dr. Sigita Žilinskaitė, Kaunas University of Technology	Good practice example in cooperation
Good practice example in cooperation	Good practice example in cooperation Neringa Šepėrienė UAB algorithms, Astoria Gajdys Vinius University, Dr. Tomas Jagoškaitė Hospital of Lithuanian University of Health Sciences (LSMU) Kaunas clinics
Aurelija Povilaitė, Widening NCP in Lithuania Prof. Dr. Asta Dauskaitė, project coordinator, Kaunas University of Technology	Twinning collaboration scheme in Horizon Europe
16.15-16.30	Twinning Project DISECO
16.15-16.30 Q&A	

**October 5** IGLO Open event “Association to the Horizon Europe” (Ms. Rūta Žarnauskaitė, DG-RTD)

**October 12** Webinar “How to collaborate with UK now and in the future – mobility and cross border cooperation?”

**October 20** Conference “Lithuanian-French scientific cooperation in Horizon Europe: results and perspectives”

**October 28** [Info session and brokerage “Horizon Europe and European Defence Fund: differences and similarities”](#)



2014-2020 Operational Programme for the European Union Funds Investments in Lithuania

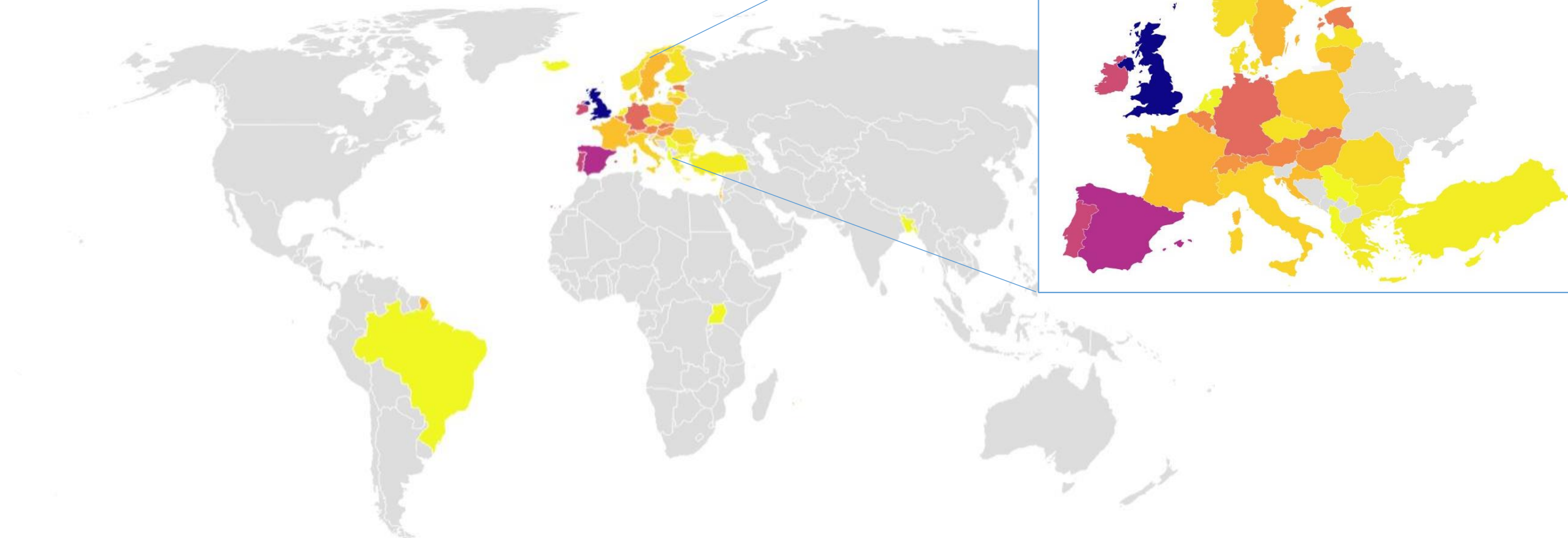


# LINO

Lithuanian RDI Liaison Office



## Together we are visible!



Research  
Council of  
Lithuania



2014-2020 Operational  
Programme for the  
European Union Funds  
Investments in Lithuania

# LINO

Lithuanian RDI Liaison Office

## Information chanelns



[LINO biuras](https://www.facebook.com/LINObiuras/)

<https://www.facebook.com/LINObiuras/>



[Lithuanian RDI Liaison Office LINO](https://www.linkedin.com/company/lithuanian-rdi-liaison-office-lino/)

<https://www.linkedin.com/company/lithuanian-rdi-liaison-office-lino/>



[@Lino\\_OfficeLT](https://twitter.com/Lino_OfficeLT)

[https://twitter.com/Lino\\_OfficeLT](https://twitter.com/Lino_OfficeLT)



[Lino Office channel](https://bit.ly/3z5YlgW)

<https://bit.ly/3z5YlgW>

The screenshot shows the LINO website interface. At the top left is the LINO logo and navigation links: 'Aplie biurą', 'Naujienos', 'LINO LT kvietimai teikti paraiškas', 'Fotogalerija', 'Renginiai', 'Naudingos nuorodos', and 'ENGLISH'. The main content area is divided into three columns: 'NAUJIENOS' (News) with two articles from March 2018, 'RENGINIAI' (Events) with a calendar for March 2018 and a list of upcoming events, and 'VIZITAI' (Visits) with a map of Lithuania. The calendar shows the 30th of March as the current date.

<http://lino.lmt.lt/>



## Our team



Dr. Brigita Serafinavičiūtė  
Head of the Office



Julija Baniukevič  
Policy Analyst



Tadas Tumėnas  
Policy Analyst

Rue Belliard 41-43, 1040 Bruxelles, Permanent Representation of Lithuania to the EU

Thank you and let's stay connected!

# LINO

Lithuanian RDI Liaison Office

[www.lino.lmt.lt](http://www.lino.lmt.lt)

[brigita.serafinaviciute@lmt.lt](mailto:brigita.serafinaviciute@lmt.lt)

