



#HorizonEU

THE EU RESEARCH & INNOVATION PROGRAMME

2021 – 2027

**SOCIAL SCIENCES AND HUMANITIES IN
HORIZON EUROPE**
Diving into the opportunities 02 June 2021

**SOCIAL SCIENCES AND HUMANITIES IN THE
NEW EU FRAMEWORK PROGRAMME**

SSH integration under Horizon Europe



HARALD HARTUNG, HEAD OF UNIT
“FAIR SOCIETIES & CULTURAL
HERITAGE”

DG R&I/D.3

Structure of Horizon Europe

HORIZON EUROPE

EURATOM



* The European Institute of Innovation & Technology (EIT) is not part of the Specific Programme

SSH in Horizon Europe

Cluster 2: Culture, Creativity and Inclusive Society

- Dedicated to the human, social and societal aspects of EU-funded R&I
- Predominantly SSH-focused

Effective integration of social sciences and humanities in all clusters

“The effective integration of social sciences and humanities (SSH) in all clusters, including all missions and partnerships, is a principle through the programme cycle. SSH are a key constituent of research and innovation, especially regarding the twin green and -digital transitions.”

(From draft Horizon Europe Strategic plan)

Integration of Social Science and Humanities

-The human factor in R&I -

- Need for “**human centric**” focus across all research areas
- Not a single discipline currently able to fully address very complex and current **societal challenges**
- Necessary inter-action between STEM and SSH fields: fostering multi, trans and **inter-disciplinary approaches**
- **Presence of SSH** across all research and innovation areas, including e.g. future missions and partnerships
- Need to examine in the future **the societal impact** of science and research, in particular for novel policies

Integration of social sciences and humanities

- **Building on experience from Horizon 2020**
 - SSH integration is a cross-cutting principle
 - SSH-flagging of topics (134 flagged for 2021 – 152 flagged for 2022)
 - Yearly monitoring of SSH integration
- **What's new in Horizon Europe?**
 - More holistic (applying across the entire program and over the entire cycle)
 - More explicit (expected societal impacts clearly set out)
 - More forceful (explicitly evaluated and followed-up)

Horizontal issues in H2020

- [International cooperation](#)
- [Social Sciences & Humanities](#)
- [Open access & Data management](#)
- [Climate action & Sustainable development](#)
- [Ethics](#)
- [Gender](#)
- [SMEs](#)
- [ERA-NETs](#)
- [Links to regional policy](#)
- [Intellectual property](#)
- [Innovation procurement](#)

Horizon Europe legislation defines three types of impact tracked through **Key Impact Pathways**

1. Creating high-quality new knowledge
2. Strengthening human capital in R&I
3. Fostering diffusion of knowledge and Open Science

**Scientific
Impact**



4. Addressing EU policy priorities & global challenges through R&I
5. Delivering benefits & impact via R&I missions
6. Strengthening the uptake of R&I in society

**Societal
Impact**



7. Generating innovation-based growth
8. Creating more and better jobs
9. Leveraging investments in R&I

**Economic
Impact**



Integration of social sciences and humanities

How?

- Co-creation and drafting
- Topics: some are SSH flagged (some not): what does it mean?
- Evaluation of the proposals
- Selection of the experts
- Reporting

Co-creation and drafting

- Structure: scribes / coordinators / SSH correspondents
- Content: advise / monitoring / briefing
- Guidance to scribes: SSH should be integrated in a clear and holistic way, from the beginning of the drafting process
- Sentence with reference to integrating SSH in the project

SSH flagging

- Why?
To encourage a stronger SSH participation in multidisciplinary projects
- How?
R&I topics where contributions from SSH disciplines are deemed important are flagged
- How to find an overview of SSH flagged topics?
Similar to Horizon 2020: Will be visible in the Funding and Tenders web portal

SSH information in the proposals

- **Application form:** Role of participating organisation in the project. Box to be ticked: Contributions from the social sciences or/and the humanities.
- **Part B**
- **Section 1. Excellence**
- For topics where the work programme indicates the need for the integration of social sciences and humanities, show the role of these disciplines in the project or provide a justification if you consider that these disciplines are not relevant to your proposed project. [e.g. 1/2 page]
- **Section 3.2. Capacity of participants and consortium as a whole** [e.g. 3 pages] The individual members of the consortium are described in a separate section under Part A. There is no need to repeat that information here. Describe the consortium. How does it match the project's objectives, and bring together the necessary disciplinary and inter-disciplinary knowledge. Show how this includes expertise in social sciences and humanities, open science practices, and gender aspects of R&I, as appropriate. Include in the description affiliated entities and associated partners, if any.

Social Sciences and Humanities (SSH)



**Social Sciences
and Humanities**

Assessing the effective contribution of social science and humanities disciplines and expertise as part of the scientific methodology of the project.

When the **integration of SSH is required**, applicants have to show the roles of these disciplines or provide a justification if they consider that it is not relevant for their project. A proposal without a sufficient contribution/integration of SSH research and competences will receive a lower evaluation score.

Evaluation (award) criteria



Three evaluation criteria

- Excellence
- Impact
- Quality and efficiency of the implementation

Each criterion includes the aspects to be taken into account

Evaluating the excellence criterion



Assess the scientific methodology:

- Is the scientific methodology (i.e. the concepts, models and assumptions that underpin the work) clear and sound? Is it in compliance with the 'do no significant harm approach'?
- Is it clear how expertise and methods from different disciplines will be brought together and integrated in pursuit of the objectives? if applicants justify that an inter-disciplinary approach is unnecessary, is it credible?
- Has the gender dimension in research and innovation content been properly taken into account?
- Are open science practices implemented as an integral part of the proposed methodology?
- Is the research data management properly addressed?
- For topics indicating the need for the integration of social sciences and humanities, is the role of these disciplines properly addressed?



Evaluating the Quality of implementation

Assess the quality of participants and the consortium as a whole:

(Note that important information on role of individual participants and previous experience is included in part A of proposal)

- Does the consortium match the project's objectives, and bring together the necessary disciplinary and inter-disciplinary knowledge.
- Does the consortium include expertise in open science practices, and gender aspects of R&I, as appropriate?
- For topics flagged as SSH relevant, does the consortium include expertise in social sciences and humanities?
- Do the partners have access to critical infrastructure needed to carry out the project activities?
- Are the participants complementing one another (and cover the value chain, where appropriate)
- In what way does each of them contribute to the project? Does each of them have a valid role, and adequate resources in the project to fulfil that role (so they have sufficient operational capacity)?
- Is there industrial/commercial involvement in the project to ensure exploitation of the results?

Participants' previous publications, in particular journal articles, are expected to be open access and existing datasets FAIR and 'as open as possible, as closed as necessary'. Evaluate positively if this is sufficiently addressed.



Evaluators

- Profile
- Selection
- Briefing
- ...There should be a sufficient number of independent external experts from the field of SSH in expert committees and evaluation panels....
- **(EU REGULATION 2021/695 OF THE EUROPEAN PARLIAMENT AND OF THE COUNCIL, of 28 April 2021, establishing Horizon Europe)**

Reporting

- Mid-term
- Final

Takeaways

- Take a proactive approach
- Foster a trans-disciplinary approach in your university
- Screen the SSH flagged topics of the work programme
- Participate in matching events to become part of consortia
- Demonstrate the added value of SSH for societal impact
- Become evaluators in the Horizon Europe evaluation of proposals

Conclusions

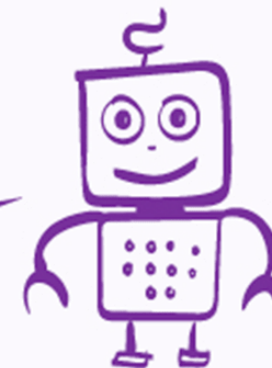
- **Today, humanity is facing unprecedented challenges**
- **Profound societal transformations will take place**
- **The SSH community is needed to create a more desirable future!**

EUROPEAN RESEARCH & INNOVATION DAYS

23 → 24
JUNE 2021

#RiDaysEU

DIGITAL EVENT



Information Sources

- H2020 – 2018 Monitoring Report
<https://op.europa.eu/en/publication-detail/-/publication/4f198f8e-4599-11eb-b59f-01aa75ed71a1/language-en/format-PDF/source-183013539>
- Horizon Europe: [Horizon Europe | European Commission \(europa.eu\)](#)
- Funding information and procedures on how to apply [Search Funding & Tenders \(europa.eu\)](#)
- Find potential project partners [Find a project partner | European Commission \(europa.eu\)](#)
- Become an expert evaluator: <https://ec.europa.eu/info/funding-tenders/opportunities/portal/screen/work-as-an-expert>
- Database of EU-funded projects, their results and success stories can be found on <https://ec.europa.eu/info/funding-tenders/opportunities/portal/screen/opportunities/projects-results;programCode=H2020>



Thank you!

HorizonEU

<http://ec.europa.eu/horizon-europe>



© European Union 2021

Unless otherwise noted the reuse of this presentation is authorised under the [CC BY 4.0](https://creativecommons.org/licenses/by/4.0/) license. For any use or reproduction of elements that are not owned by the EU, permission may need to be sought directly from the respective right holders.

Image credits: © ivector #235536634, #249868181, #251163013, #266009682, #273480523, #362422833, #241215668, #244690530, #245719946, #251163053, #252508849, 2020. Source: Stock.Adobe.com. Icons © Flaticon – all rights reserved.