



Integration of **Social Sciences**
and **Humanities** in Horizon 2020:
Participants, Budgets and Disciplines
5th Monitoring report on projects funded in 2018



**DG R&I unit D3 – Fair Societies
and Cultural Heritage**

Social Sciences and Humanities: The human factor in R&I

- Many societal challenges need to be addressed through research and innovation, but are too complex for one or a few scientific disciplines to deliver upon. Interaction between STEM and SSH fields is required to address such challenges adequately.
- Improved integration of SSH disciplines in R&I projects is thus expected to lead to stronger societal impact, broader citizen engagement and a better future.
- The SSH integration monitoring report attempts to assess and analyse the degree of SSH integration in Horizon 2020.
- The work on SSH integration in Horizon 2020 should be seen as a precursor for the deeper cross-sectoral approach in Horizon Europe.

Social Sciences & Humanities integration monitoring report, background and principles

- Monitoring the development of SSH integration is a commitment made under the Horizon 2020 Programme.
- A comprehensive methodology has been developed to provide measurable indicators of SSH integration, including quantitative and qualitative assessments.
- The monitoring report provides yearly assessments of SSH integration, employing this methodology. The 5th edition of the report, to be published in 2020, assesses the integration of SSH in projects funded in the year 2018.
- Although primary focus is on the Societal Challenges and Industrial Leadership parts of the Horizon 2020 programme, the report also looks into ERC, MSCA, FET, RI and (a novelty for this edition) SwafS.

Main findings

- Findings indicate a general positive evolution in terms of SSH presence and intensity in Horizon 2020 over the years monitored (2014 – 2018).
- Quality of SSH integration, as measured by the indicators developed, has increased significantly. The number of SSH-flagged topics, the budget allocated to those topics and to SSH partners also show strong increases.
- Levels of SSH participation continue to vary strongly between programme parts, between scientific disciplines and between member states.
- The relative participation of SSH partners as part of the total in projects under SSH flagged topics continue at similar levels as previous years.

Quality of SSH integration:
65% good quality 2018 vs
40% 2014

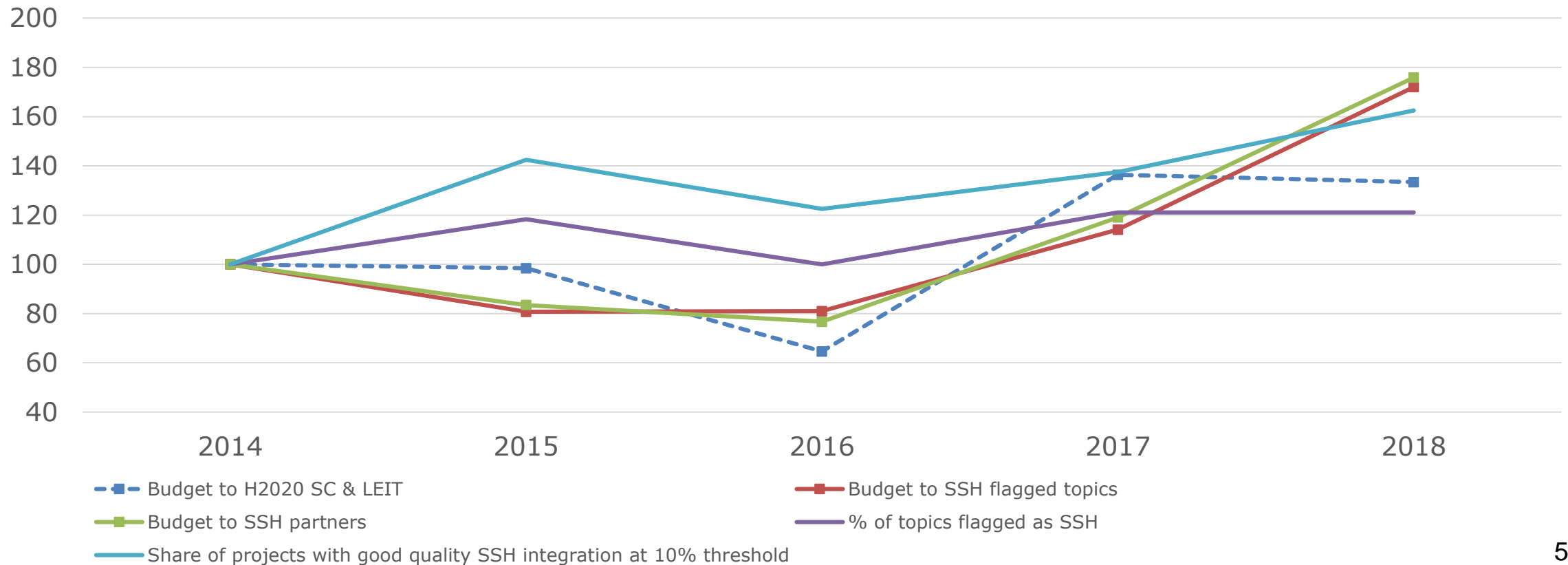
Total budget to SSH partners:
€415 million 2018 vs
€236 million 2014

Proportion of SSH partners
under flagged topics:
13% in LEIT-NMBP vs
84% in SC6

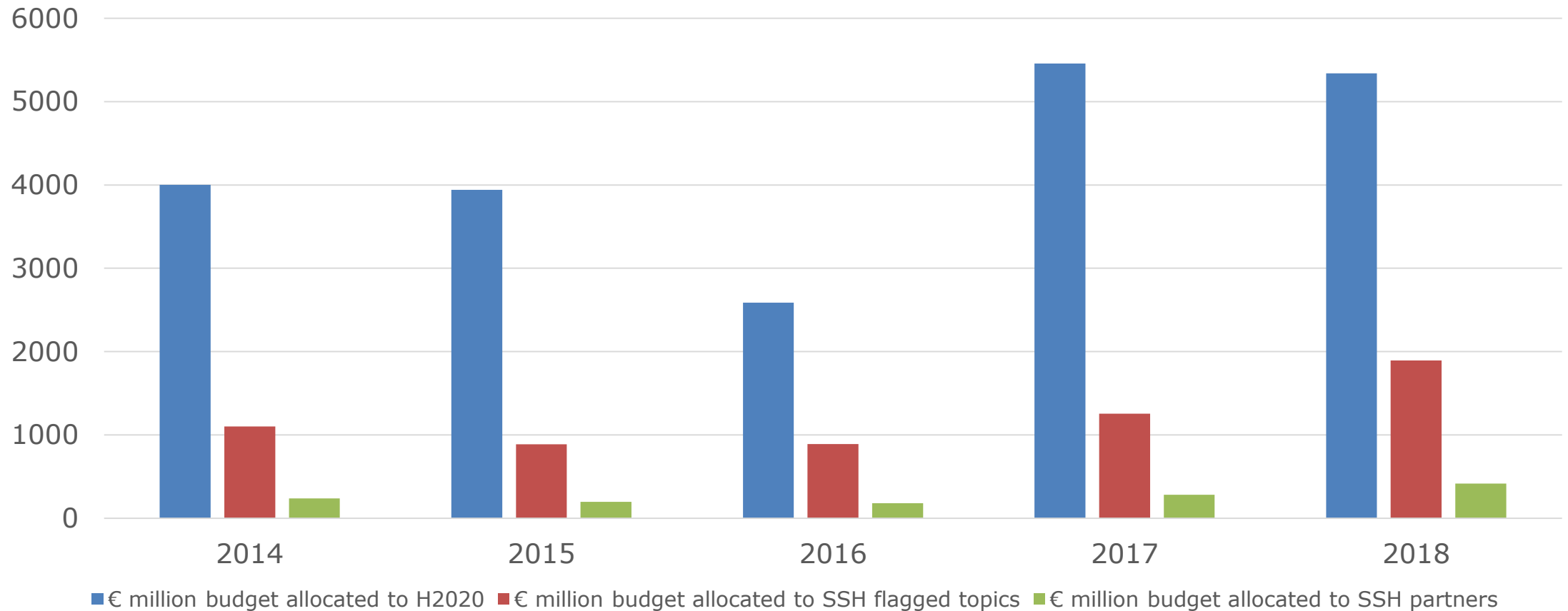
26% 2018 and 2014

Main findings: Encouraging overall trends

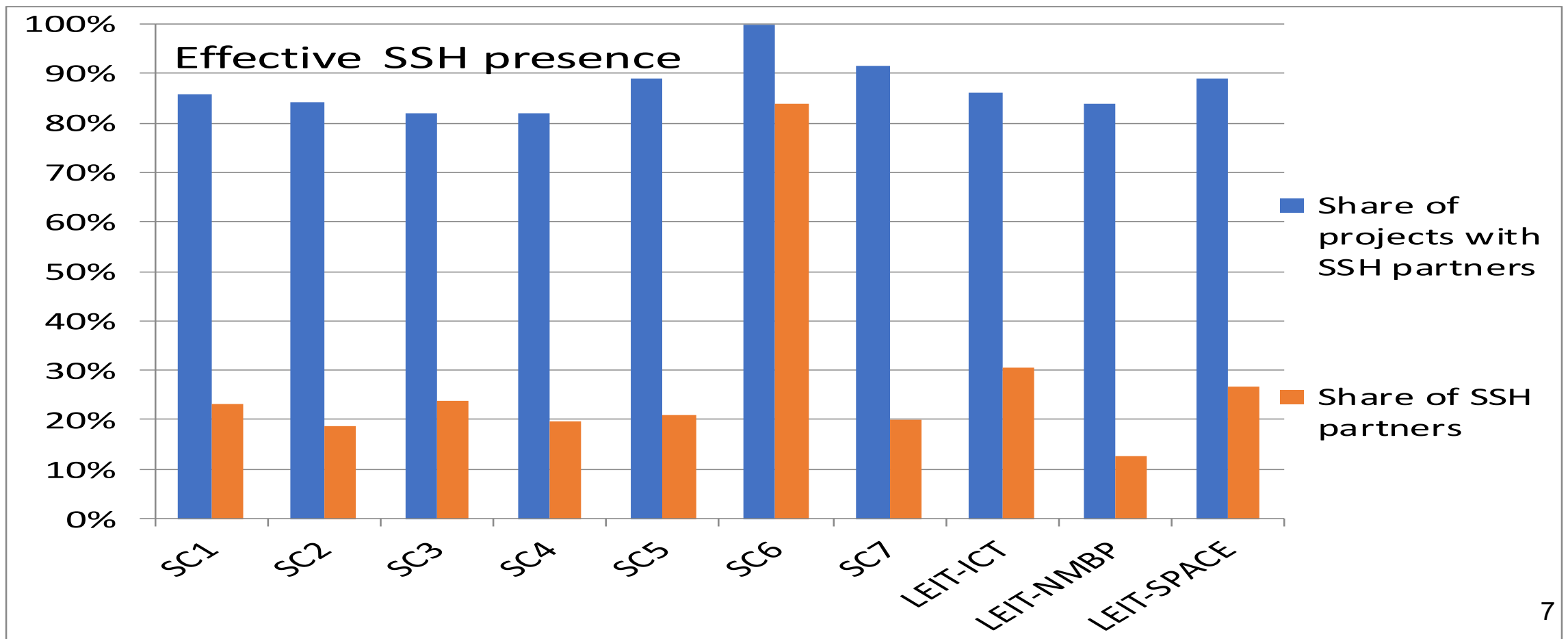
Evolution of key data 2014-2018 (2014 = 100)



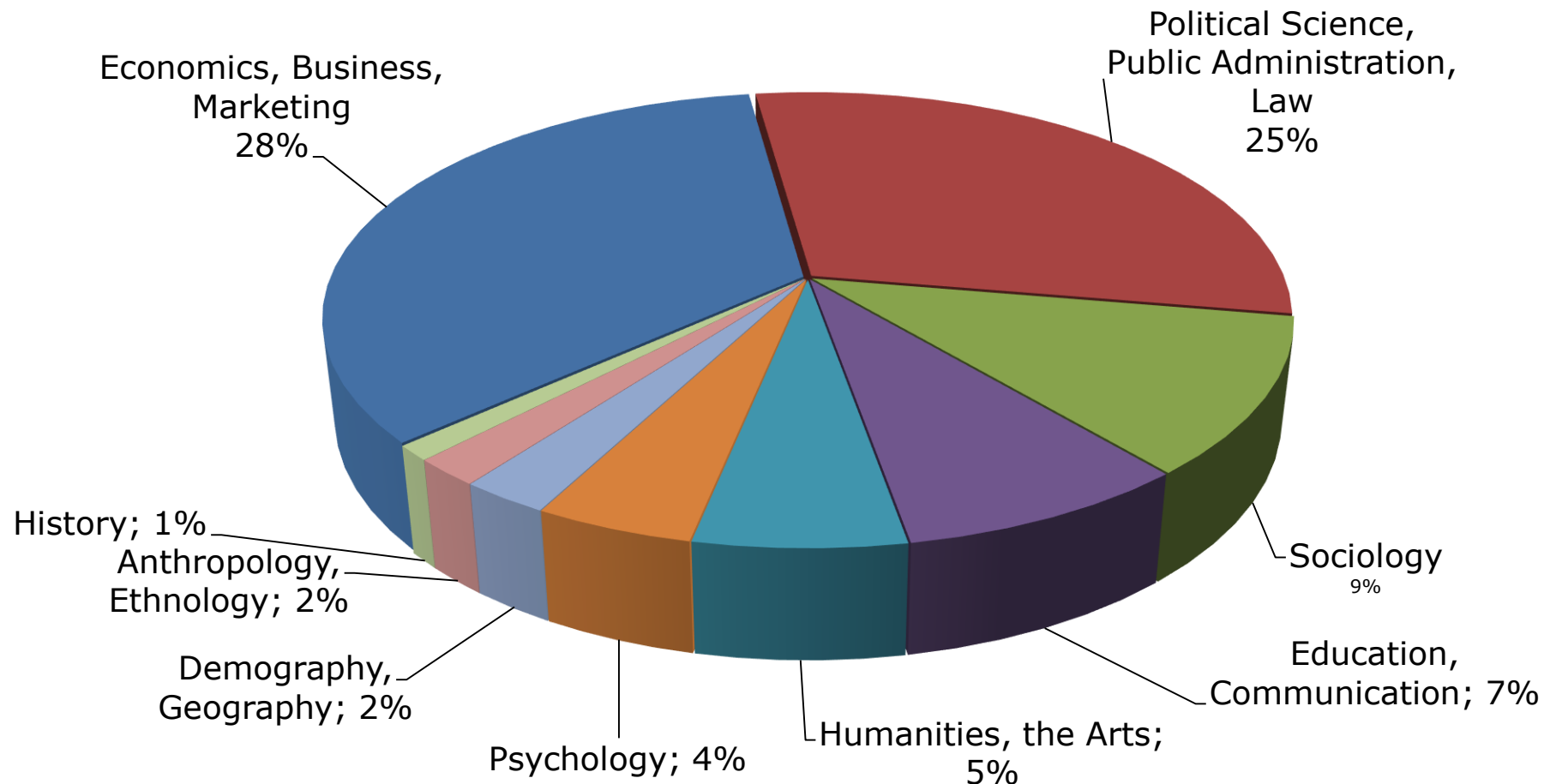
Main findings: Increasing SSH participation in terms of budget



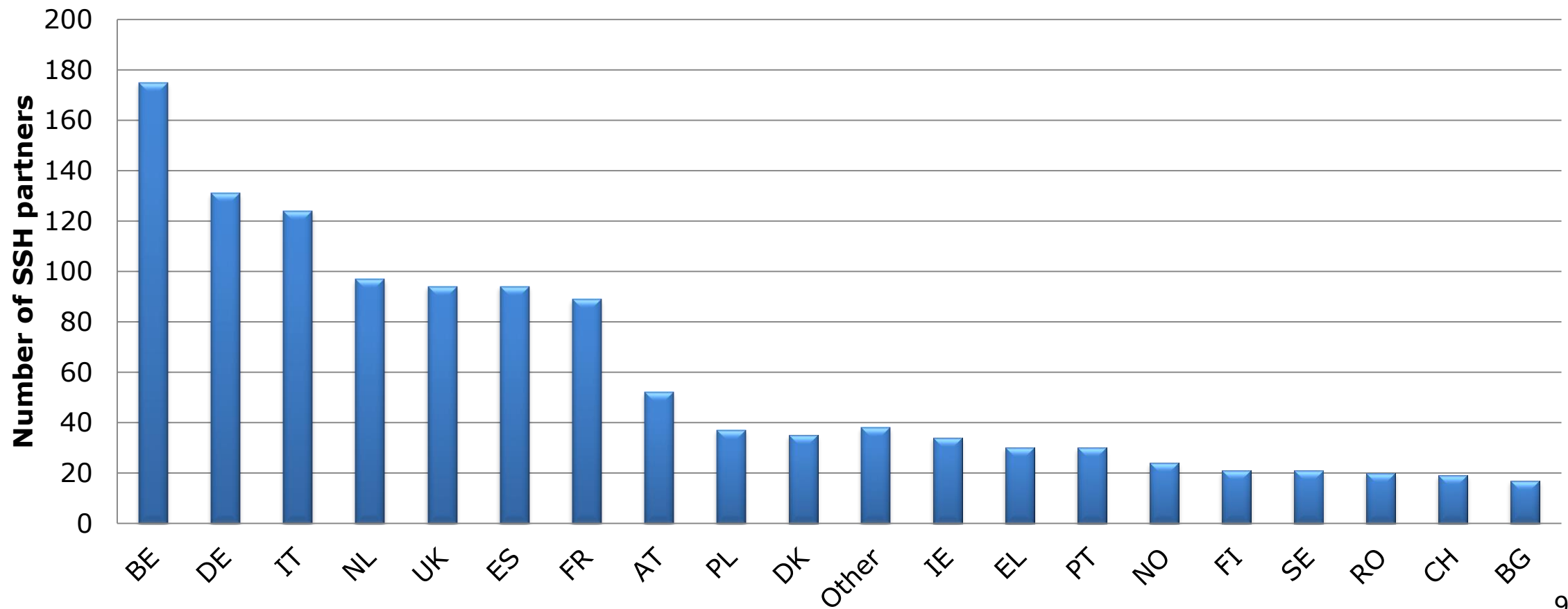
Main findings: SSH participation differs by programme part



Main findings: Persistent differences by scientific disciplines

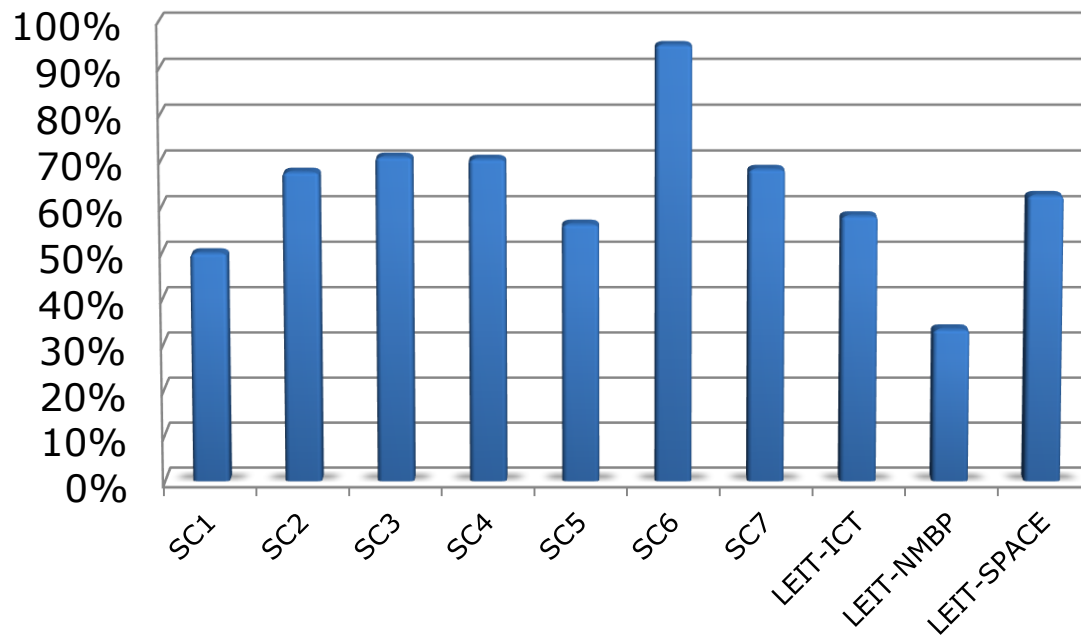


Main findings: The EU-15 dominate among member states

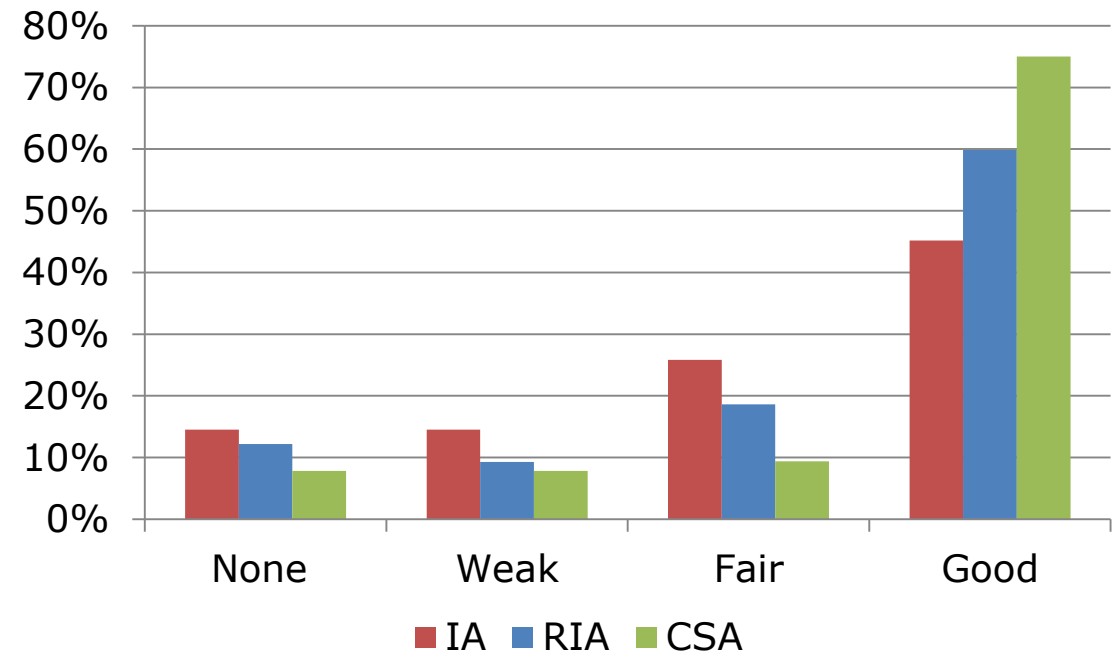


Main findings: Quality of SSH integration varies by programme part and by type of project

Share of projects with good SSH integration at 10% threshold

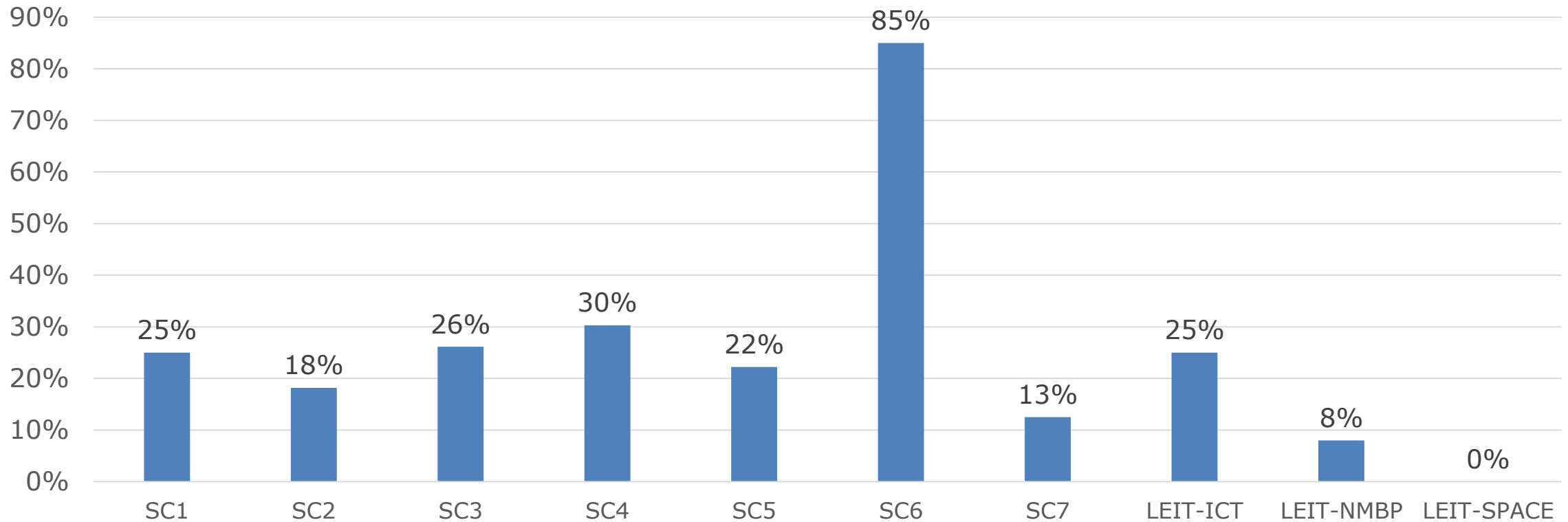


Quality of SSH integration at 10% threshold



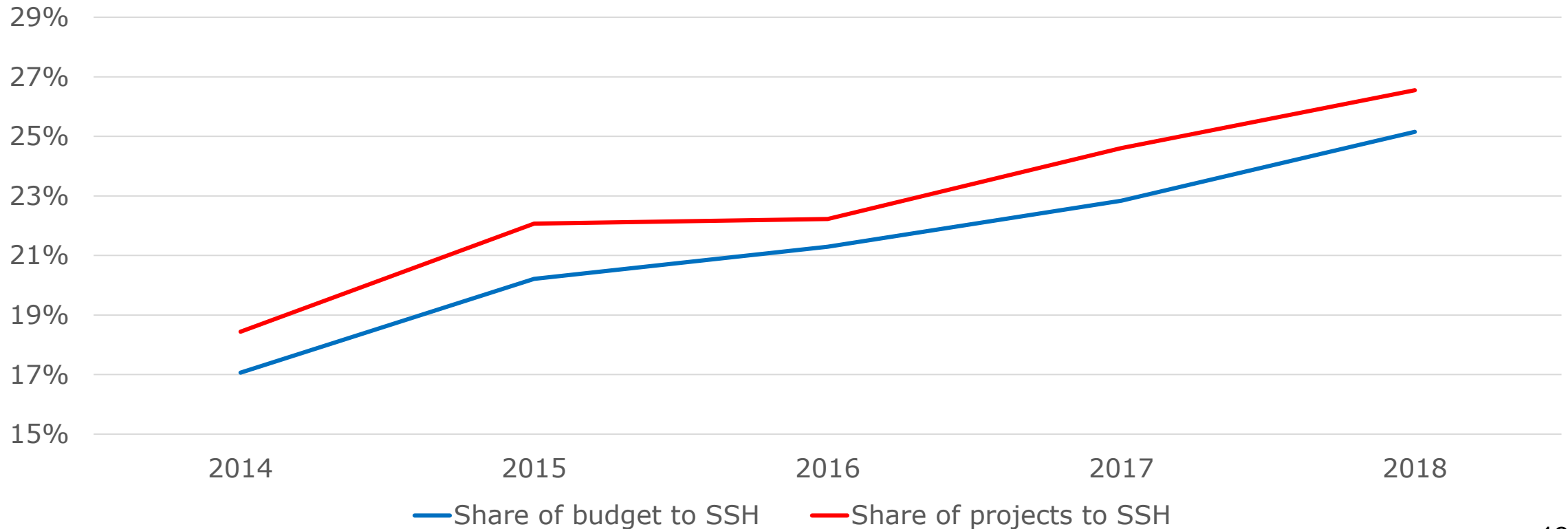
Main findings: SSH partners coordinated on average 29% of projects under SSH flagged topics

Share of projects under SSH flagged topics coordinated by an SSH partner



Main findings: Encouraging trends also found in the Excellent Science part of the Horizon 2020 programme

Evolution of SSH research supported by ERC as share of total



Conclusions: Encouraging results and more to do

- Findings indicate that efforts made to strengthen SSH integration, such as SSH flagging of topics, seem to contribute to increased SSH presence and intensity.
- SSH participation seems to grow also in the Excellent Science part, despite the general bottom-up approach to funding in this section of the programme.
- The SSH community seem to display sufficient capacity and interest to step up their involvement in Horizon 2020.
- Findings also indicate, however, that there is probably a large potential to further improve SSH integration. Progress is uneven, and the overall share of SSH participation is still relatively low in many respects.

Future: Horizon Europe will facilitate deeper SSH integration

- Work on SSH integration in Horizon 2020 is to be seen as a precursor for the deeper cross-sectoral approach of Horizon Europe:
 - SSH to be fully integrated across all clusters, including specific and dedicated activities such as missions and partnerships.
 - A holistic approach to SSH will achieve deeper integration, covering the entire cycle in a meaningful way, from co-creation and co-design of topics of calls for proposals to the selection and implementation of projects.
- Concrete proposals for Horizon Europe, currently under negotiation, include:
 - A revisited evaluation process.
 - A novel category of interdisciplinary experts for panel evaluations of SSH flagged projects.
 - New cross-cluster complementarities and synergies in terms of SSH presence across the entire new programme.



THANK YOU!

The report can be found here:

<https://op.europa.eu/en/publication-detail/-/publication/4f198f8e-4599-11eb-b59f-01aa75ed71a1/language-en/format-PDF/source-183013539>

Questions, comments or suggestions are welcome:

beatrice.lucaroni@ec.europa.eu

rickard.bucksch@ec.europa.eu